



# **INSTRUCTIONS & PARTS LIST FOR NO. 2S SERIES TOOLS SKIN CLAMP RUNNER**

## **BE SURE TO LUBRICATE**

All Sioux Air Tools are manufactured to extremely close tolerances. Reasonable care and preventative maintenance will greatly prolong their service life.

This line of tools is designed for a long life of continuous duty on assembly lines, with a minimum of service and maintenance. Rotating parts are mounted on extra-capacity ball bearings, rotors and spindles are finished to extreme accuracy for power and low air consumption, gears and pinions are oversize and correctly hardened for quietness and long life.

Special attention has been given to ease of servicing. These tools can be disassembled and reassembled with ease.

Before connecting the tool, blow the air line to remove water and dirt which may have accumulated. This is especially important for a new line or when the line has not been used for some time.

## **LUBRICATION**

### **GEARS**

The gears are lubricated at the factory. Every 100 hours of operation add 1/4 oz. of Sioux Grease No. 1198.

### **AIR MOTORS**

Sioux Air line lubricators are recommended. When used adjust lubricator to deliver 2 to 4 drops of Sioux Air Motor Oil No. 288 per minute to the air tool. If tool is not used with a lubricator, place 10 to 15 drops of Sioux No. 288 oil into air inlet twice daily.

## **OPERATION**

The air motor is started by depressing the operating lever or trigger. Motor speed may be controlled by adjusting the slotted head control which is located on the tool housing or on some models on the trigger surface.

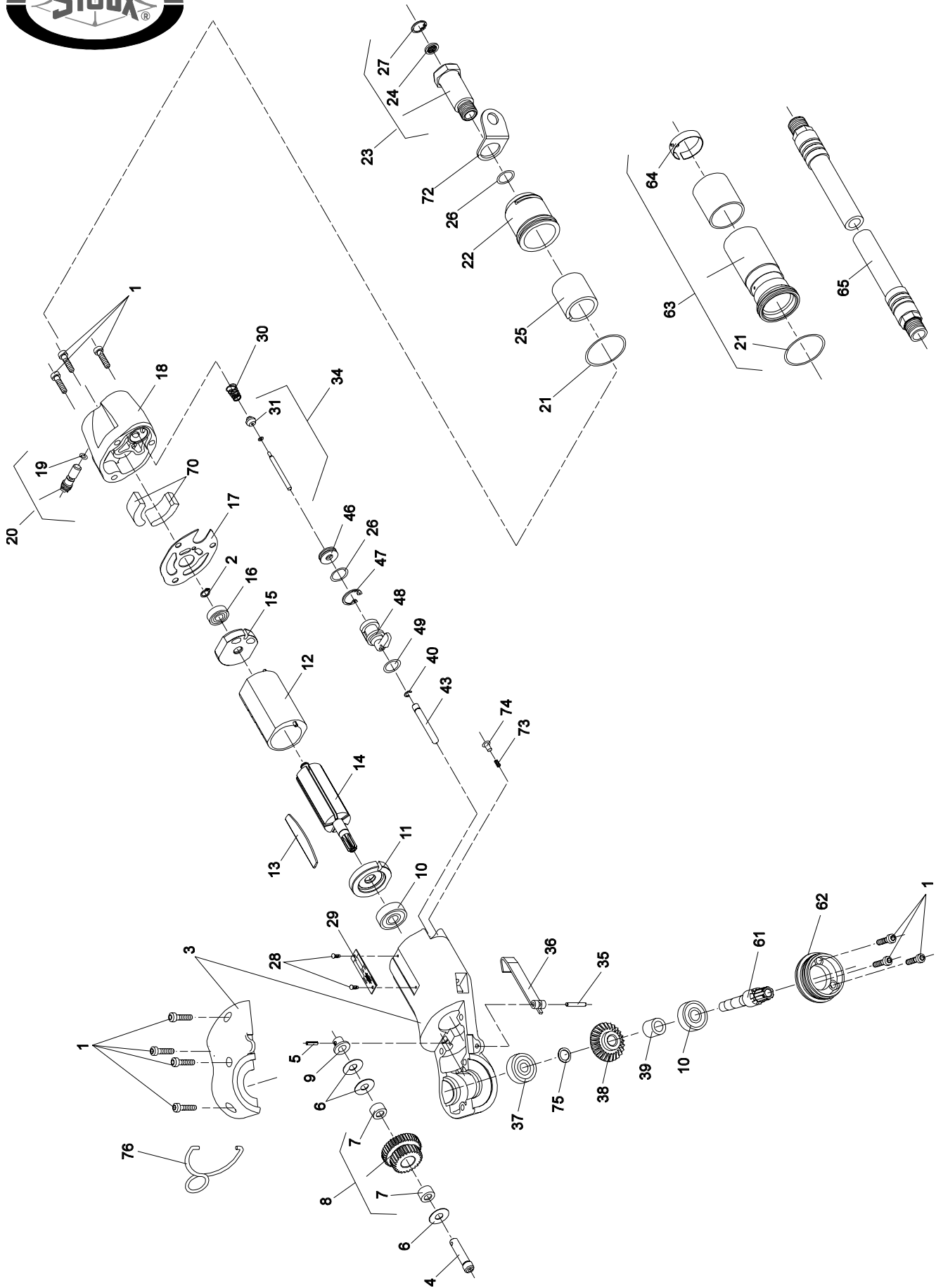
If the tool is equipped with reversing button, always depress the button fully to obtain maximum power.

## **HOSE AND HOSE CONNECTION**

Air supply hose should not be less than 3/8" I.D. If extension hose is necessary, use 3/8" I.D. hose.

# **SIoux TOOLS INC.**

2901 FLOYD BOULEVARD ■ PO BOX 507 ■ SIOUX CITY, IOWA 51102-0507 ■





# INSTRUCTIONS & PARTS LIST FOR NO. 2S SERIES TOOLS SKIN CLAMP RUNNER

**Fig. Part****No. No. Description**

1. 65009 Screw—M4 x .7 (10)\*
2. 21491 Ring—Retainer
3. 65031 Ass'y—Housing
4. 44383 Shaft—Cluster Gear
5. 30235 Pin—Roll 3/32" x 3/8"
6. 35098 Washer (2)\*
7. 10041 Bearing—Needle (2)\*
8. 19319 Ass'y—Gear & Bearing (1600RPM)
- 19321 Ass'y—Gear & Bearing (1000RPM)
- 19323 Ass'y—Gear & Bearing (2200RPM)
9. 13202 Spacer—Sleeve
10. 10220 Bearing—Ball (2)\*
11. 10555 Plate—Lower End
12. 64108 Cylinder (Rev.)
13. 63192 Vane—Rotor (Set of 5)
14. 54861 Rotor (1000-1600-2200RPM)
15. 10552 Plate—Upper End
16. 10230 Bearing—Ball
17. 65008 Gasket
18. 65027 Back Cap (Rev.)
19. 14323 Ring—"O" 1/16" x 1/4" x 1/8"
20. 65016 Ass'y—Speed Control
21. 14371 Ring—"O" 1/16" x 1-5/16" x 1-3/16"
22. 65030 Deflector—Exhaust
23. 54837 Adaptor—Intake
- 53942 Adaptor—Intake—Remote Exhaust
24. 30463 Screen
25. 65040 Pad—Silencer
26. 14312 Ring—"O" (4)\* 1/16" x 9/16" x 7/16"
27. 21541 Ring—Retainer
28. 09954 Screw—Drive #0 x 3/16 (2)\*
29. 65010 Plate—Name
30. 21401 Spring

**Fig. Part****No. No. Description**

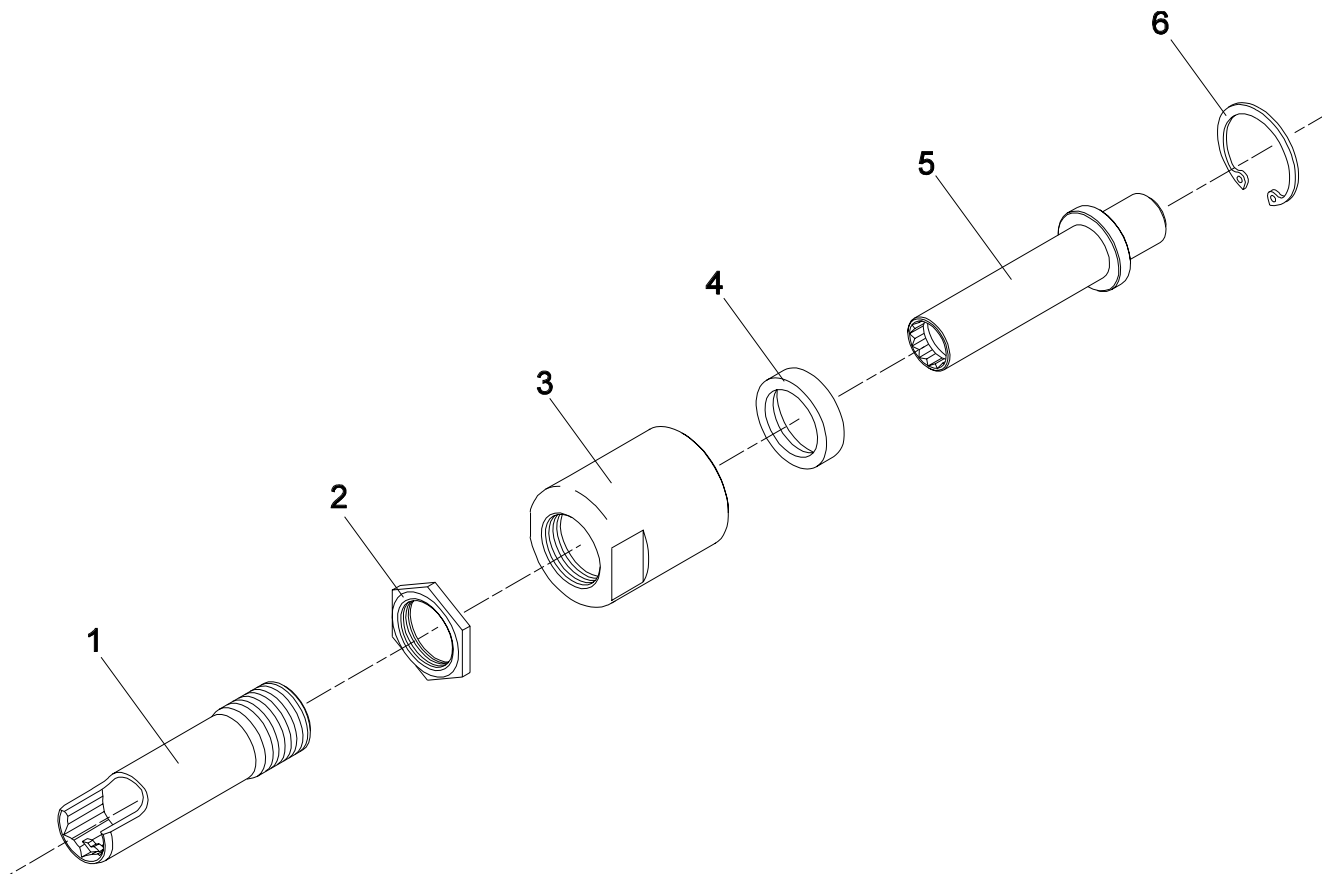
31. 14325 Valve
34. 65013 Ass'y—Valve
35. 30499 Pin—Roll 3/32" x 11/16"
36. 65002 Trigger
37. 10104 Bearing—Ball
38. 65014 Gear—Face (1600RPM)
- 65018 Gear—Face (1000RPM)
- 65019 Gear—Face (2200RPM)
39. 65001 Spacer—Chuck Spindle (1600RPM, 1000RPM)
- 65256 Spacer—Chuck Spindle (2200RPM)
40. 21766 Ring—Retainer
43. 65005 Rod—Valve
46. 65023 Seat—Valve
47. 65025 Ring—Retainer
48. 65007 Valve—Reversing
49. 65026 Ring—"O" (Teflon)
61. 65287 Spindle—Tool
62. 44353 Adaptor—Clutch Case
63. 1365 Exhaust Tube (Incl. Fig. 21 & 64)
64. 43210 Ass'y—Spring Clip (Remote Exhaust)
65. 1359 Air Hose (Remote Exhaust)
70. 65039 Liner—Back Cap (2)\*
72. 65038 Bail
73. 21392 Spring
74. 65271 Plunger—Detent
75. 35315 Spacer
76. 21447 Bail

\*Order Quantity As Needed

Furnish Catalog, Serial and Model Number When Ordering Parts



# INSTRUCTIONS & PARTS LIST FOR NO. 2S SERIES TOOLS SKIN CLAMP RUNNER



**Fig. Part**

No.	No.	Description
1.	65252	Nose Piece
2.	65254	Nut—Hex
3.	65251	Housing
4.	65253	Bearing—Thrust
5.	65255	Driver
6.	21513	Ring—Retainer

65232 Complete Assembly

Furnish Catalog, Serial and Model Number When Ordering Parts

## SIoux TOOLS INC.

2901 FLOYD BOULEVARD ■ PO BOX 507 ■ SIOUX CITY, IOWA 51102-0507 ■